

How AI is revolutionising clinical processes in aged care and home care

Webinar | 23 May 2024



Acknowledgement of Country

We acknowledge the Traditional Custodians of country throughout Australia and their connections to land, sea and community.

We pay our respects to their Elders past and present and extend that respect to all Aboriginal and Torres Strait Islander peoples today.

This event qualifies
for 1 CPD point. Add
it to your log.



Please ask questions
in the chat

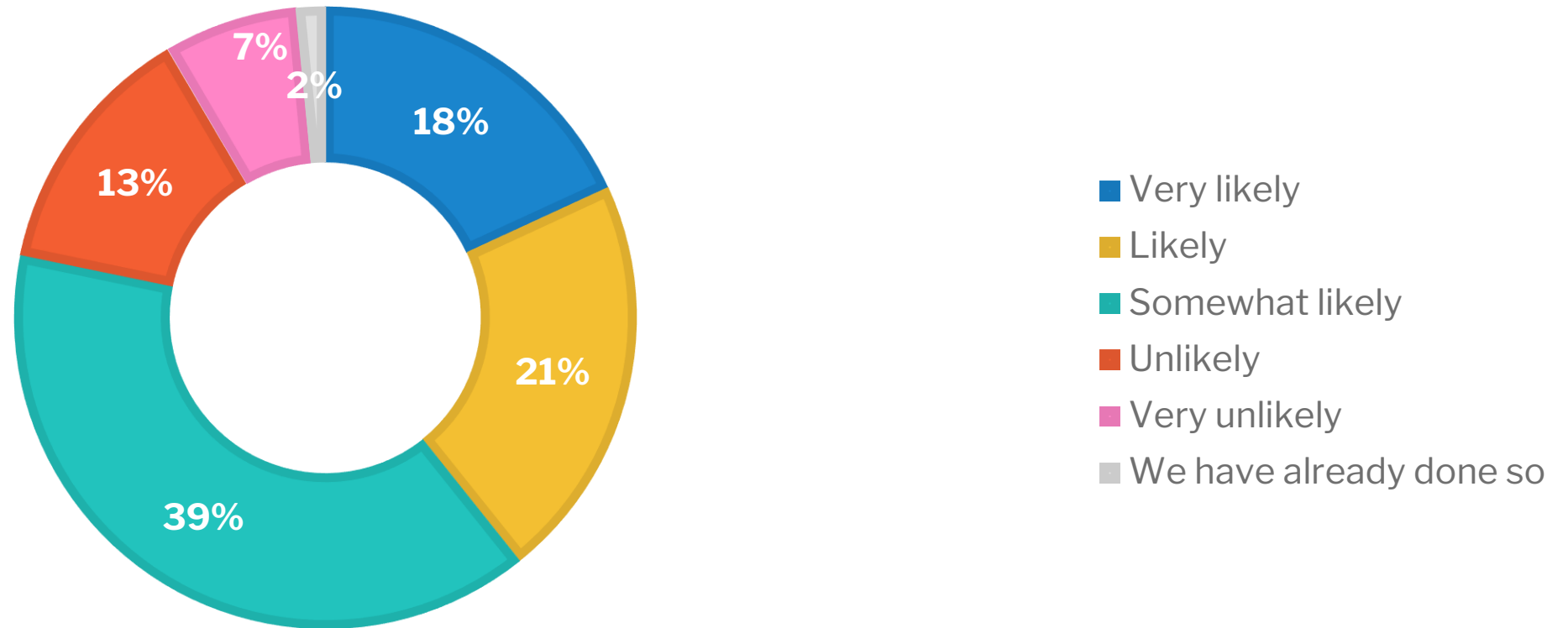


Agenda

1. Welcome
2. Poll findings
3. Let's hear from the panel
4. What we have learned about AI for Aged Care and Home Care
5. More from the panel
6. Q&A
7. Close

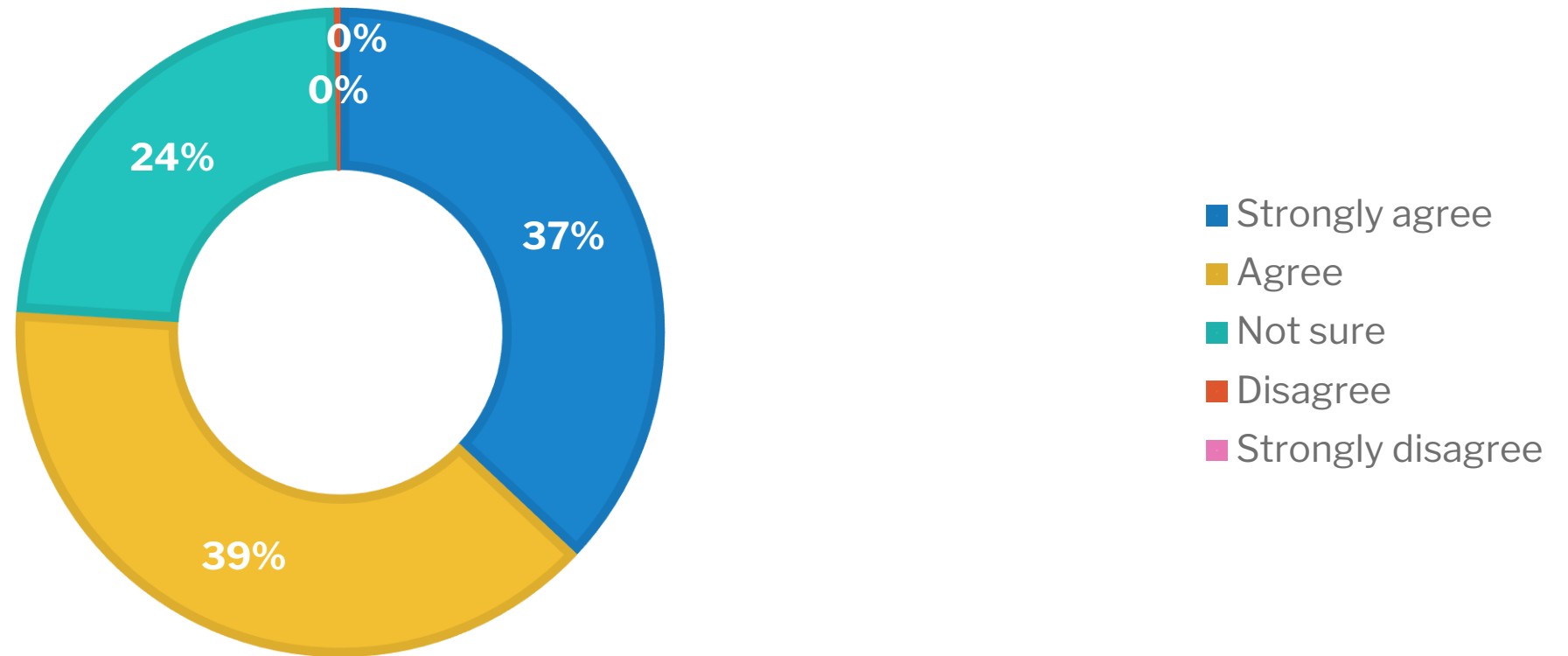


What is the likelihood that you will look at implementing an AI project in the next 12 months?



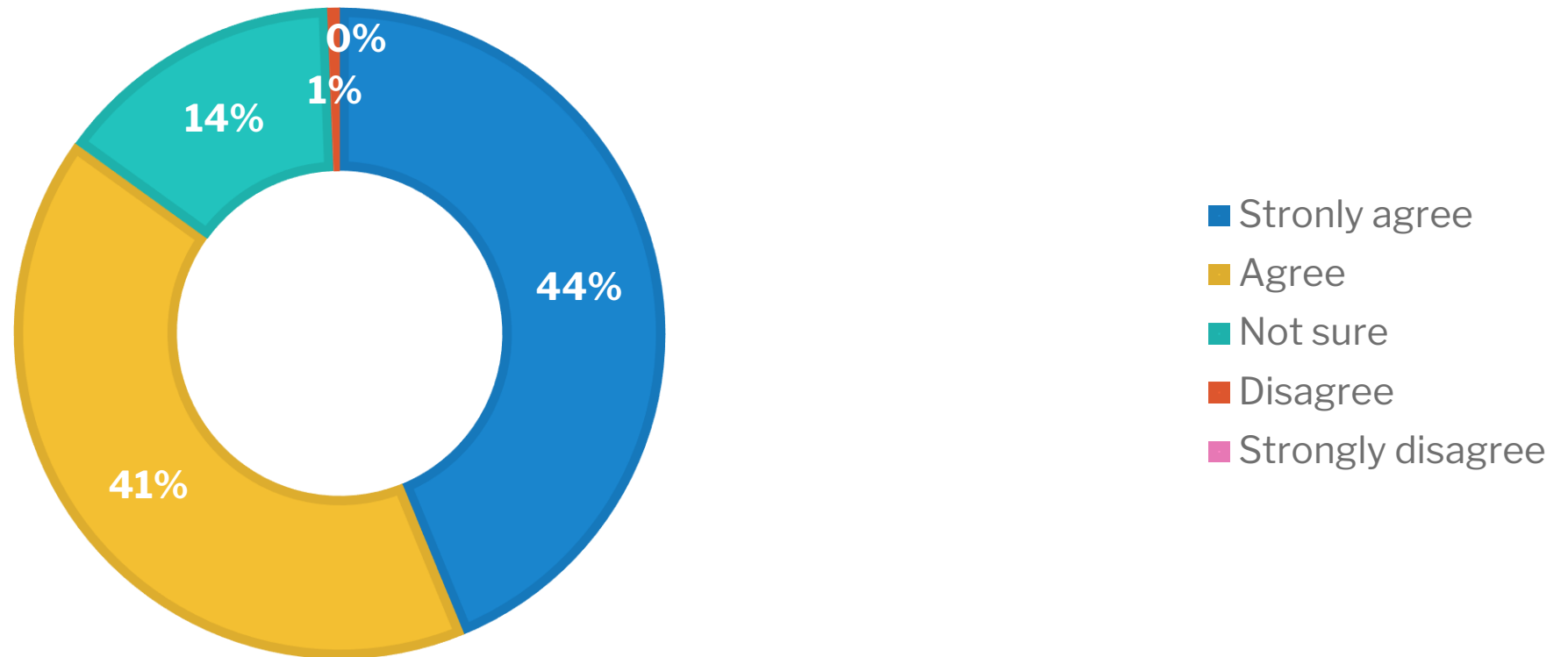
Represents 364 responses

AI presents a significant opportunity to increase efficiency of processes in aged care



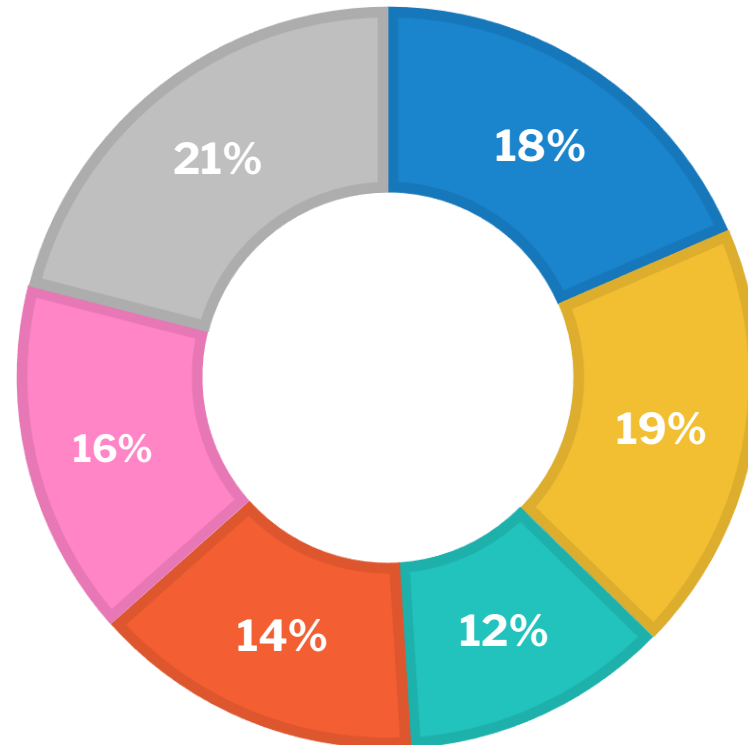
Represents 364 responses

AI presents a significant opportunity to increase insight from data analysis (e.g. Clinical data) in aged care or home care



Represents 364 responses

What are the outcomes that you would like data and AI to enable for your organisation?



- Predicting changes in resident care needs
- Predicting workforce demand and skills mix requirements
- Simulating outcomes to manage occupancy fluctuations
- Identifying revenue opportunities for additional services
- Curating monthly care statements from multiple data sources
- Enhancing consistency and quality of clinical documentation

Represents 364 responses

Meet the panel



Sue Thomson
Chief Executive Officer
McLean Care



Phil Martin
Executive Director, Aged Care
Services
MercyCare



Justin Dover
Chief Executive Officer
Alino Living

The power of AI, seamlessly integrated with your care management data, can deliver:

- [illegible]

The flowchart illustrates the process of identifying uplift opportunities from CMS Clinical Notes. The central node is "Review CMS Clinical Notes". From this node, arrows lead to "Hospital Events", "Physio Ax Review", and "Target residents". "Hospital Events" leads to "Resident of the Day", which then leads to "Observations and feedback". "Physio Ax Review" leads to "Nil Change" (marked with a red X) and "Identified Uplift" (marked with a green star). "Target residents" leads to "Identified Uplift" and "Floor staff interviews". "Identified Uplift" leads to "Floor staff interviews". "Floor staff interviews" leads back to "Observations and feedback". A large curved arrow points from "Observations and feedback" back to "Review CMS Clinical Notes", completing the cycle.

```
graph TD; RCMCN[Review CMS Clinical Notes] --> HE[Hospital Events]; RCMCN --> PAR[Physio Ax Review]; RCMCN --> TR[Target residents]; HE --> ROD((Resident of the Day)); ROD --> OF[Observations and feedback]; OF --> RCMCN; PAR --> NC[Nil Change]; PAR --> IU{{Identified Uplift}}; TR --> IU; TR --> FSI[Floor staff interviews]; FSI --> IU; FSI --> OF
```

These professionals must read and synthesise vast amounts of clinical information and have specialised knowledge of AN-ACC models to identify funding opportunities.

1. Search , consume & synthesise clinical information
2. Gather evidence & insights to validate AN-ACC class
3. Determine AN-ACC class forecast
4. Support forecast with clinical assessment references
5. Request AMO Reclassification (Human in the loop control)

Mirus Australia © 2024 Commercial in Confidence

The Mirus AI sequence

Data Ingestion & Storage:

Ingest daily interactions from your care management system into our secure data cubes, providing the vast amounts of clinical datasets.*

Unstructured to Structured Data Transformation:

Transform your clinical data into a standardised data standard. However, another outcome from this sequence is a standardised clinical dataset. (Data can also be transformed to FHIR format for CMS Interoperability)

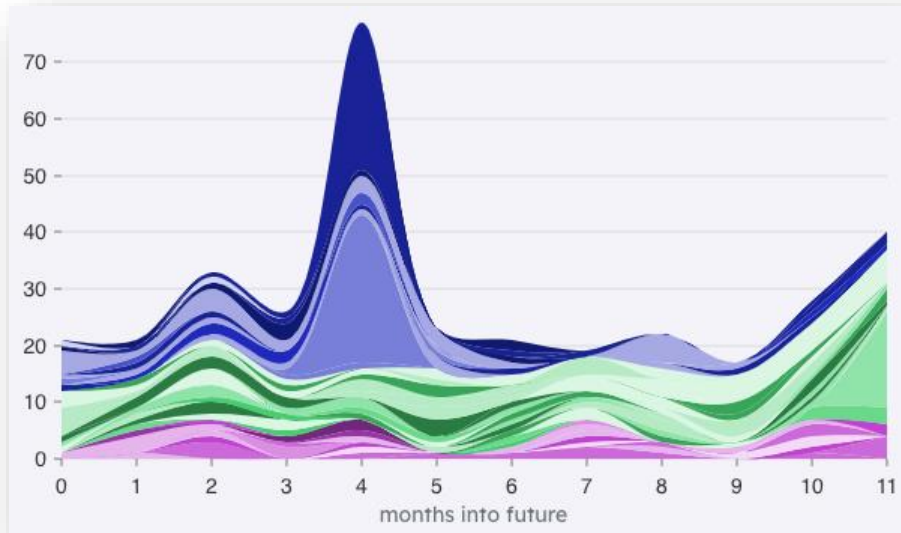
Generative AI Processing (Research questions):

We utilise AI models to process the vast clinical datasets, which are continually refined by our dedicated teams and the sector.

AI informs the Department's AN-ACC algorithm, generating evidence-based class forecasts for residents and maintaining an active clinical evidence index known as Careverse™.



Mirus AI use cases



The predictive spike, determined from the Large Medical Model (LMM) based on the clinical markings of a cohort of residents, indicates an increased need for mobility support three to five months from today.

As we compile data patterns, we apply them to our generative medical AI models. These models, trained on medical pathways and referred to as Large Medical Models (LMMs), provide valuable insights and predictions based on the accumulated data within your resident cohorts.

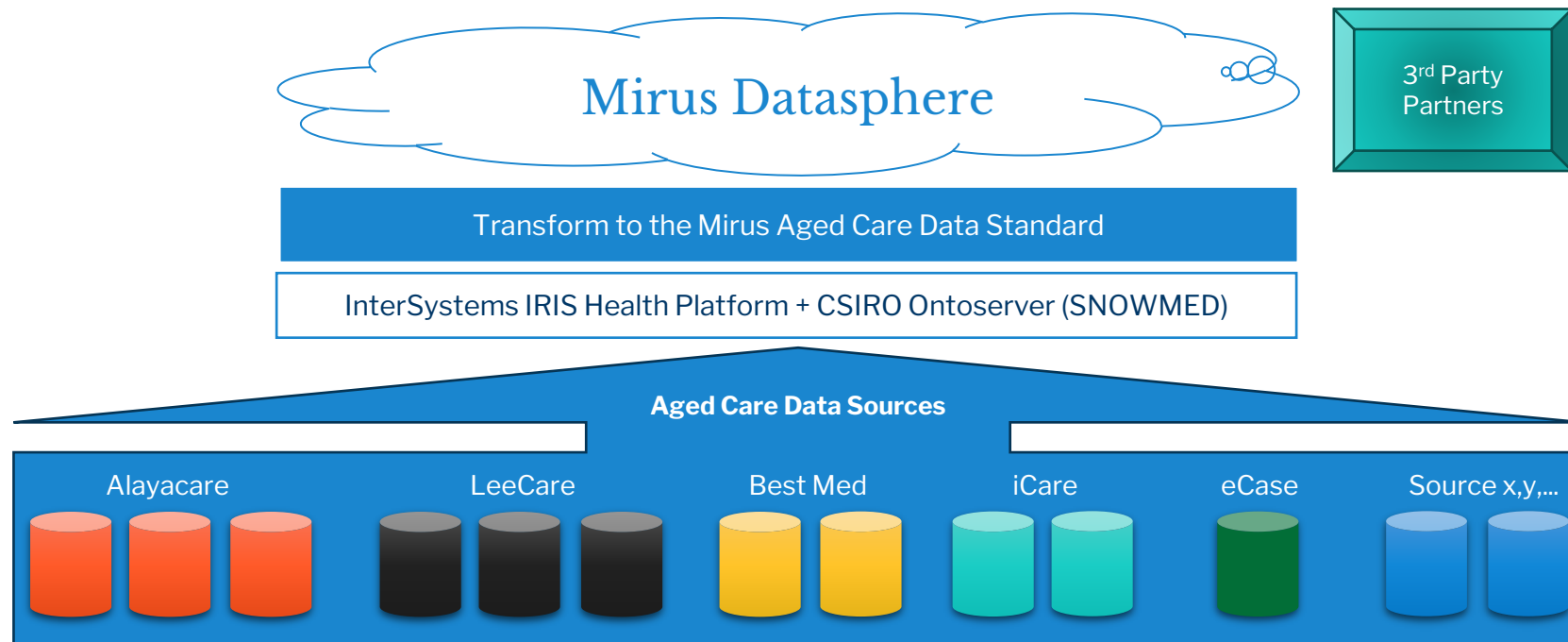
Mirus AI is empowered to bolster your organisation by simulating resident futures, providing invaluable support for:

- **Predictive workforce demand** and skill mix requirements, leveraging morbidity outcomes (Works.AI);
- **Simulating resident futures** to manage occupancy fluctuations;
- **Augmenting quality audits & tasks** for providers through continuous measurement of CI strategies, key risk audits, care statements generation;
- Explore 'Fee for Service' approaches based on future **deterioration simulations &** supporting families through their loved one's decline – e.g. Parkinson's Warrior program;

...and many more use cases on the data.

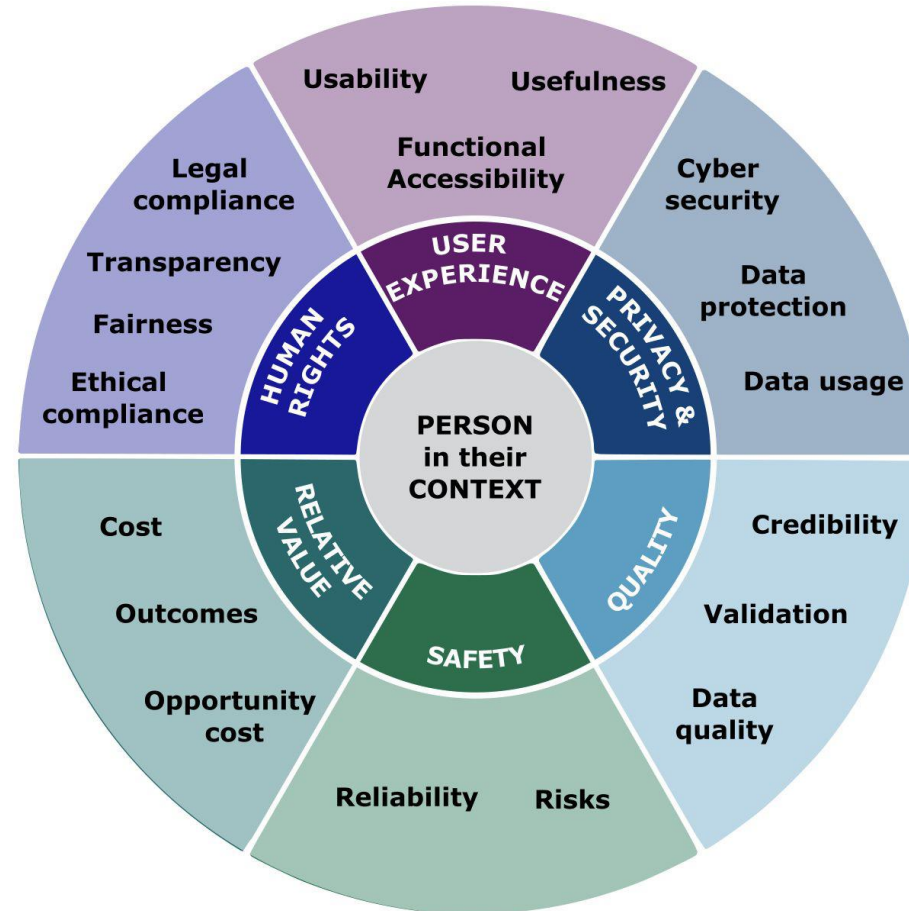
Mirus Datasphere

Transforming clinical data into a national standard model requires investment, and support from wider healthcare partners, CSIRO and InterSystems.



Mirus AI guided by CSIRO's ethical AI framework

- Outcomes focus
- Data sovereignty
- Risk mitigation



More from the panel



Sue Thomson

Chief Executive Officer at
McLean Care



Phil Martin

Executive Director, Aged Care
Services at
MercyCare



Justin Dover

Chief Executive Officer at
Alino Living

Questions from the chat

M

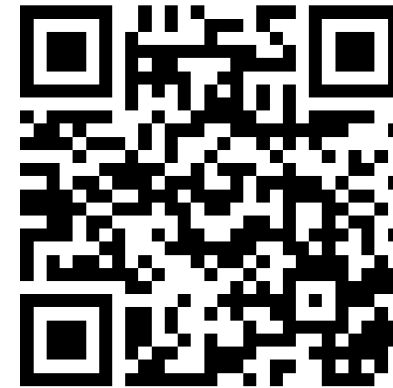


Ready to get started on your AI journey?



Mirus AI

Elevate efficiency, gain better insights and accelerate with AI



<https://www.mirusaustralia.com/mirus-ai>

Our next webinar



Strategies for profitability in Aged Care

Up to 80% of your funding comes from AN-ACC, but your profit needs to come from elsewhere.

Monday, 17 June 2024

12pm – 1pm AEST

<https://www.mirusaustralia.com/strategies-for-profitability-in-aged-care/>

Check your inbox for details or scan QR code to register now:



Contact us



Andrew Farmer

Partner

andrew.farmer@mirus.group



Rob Covino

Founder

Rob.covino@mirus.group



1300 738 145 | info@mirusaustralia.com
mirusaustralia.com