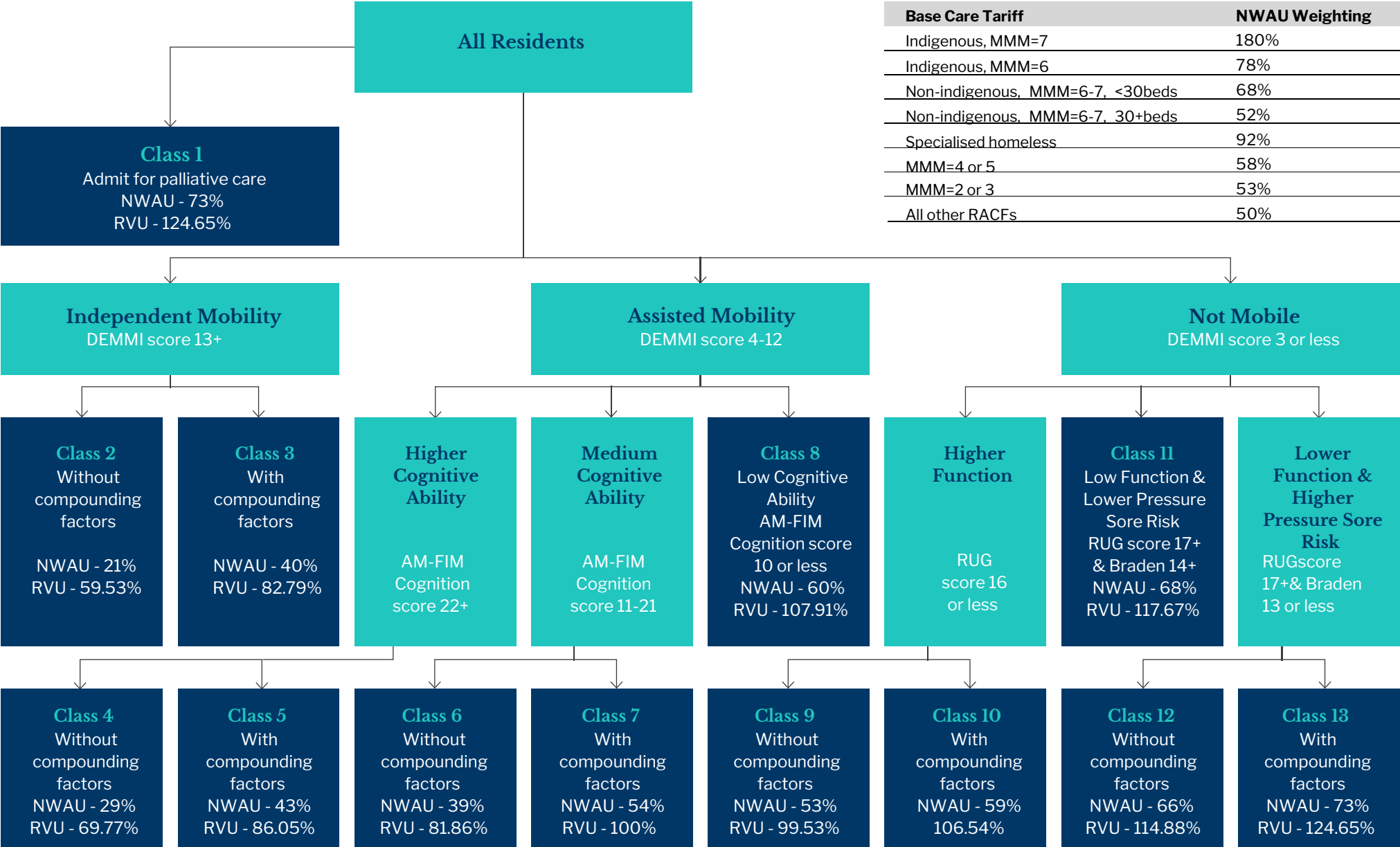


The Australian National Aged Care Classification (AN-ACC)



Base Care Tariff	NWAU Weighting
Indigenous, MMM=7	180%
Indigenous, MMM=6	78%
Non-indigenous, MMM=6-7, <30beds	68%
Non-indigenous, MMM=6-7, 30+beds	52%
Specialised homeless	92%
MMM=4 or 5	58%
MMM=2 or 3	53%
All other RACFs	50%